



ISO9001:2015

Page 1 of 2

- **OUTPUT VOLTAGE ±50V~±2KV**
- **THROUGH ZERO VOLTAGE PROGRAMMING & SETTING**
- **ARBITRARY WAVEFORM HV AMPLIFIER FAST REVERSING, SLEWING & SETTING**
- **HIGH STABILITY, LOW TEMPERATURE, LOW RIPPLE**
- **ARC AND SHORT CIRCUIT PROTECTION**
- **OEM CUSTOMIZATION AVAILABLE**



INTRODUCTION

Wisman's ZA series is a unique module, extending the operation and versatility of Applied Kilo-volts High Precision series. The ZA units feature fast slewing and setting times, together with the ability to slew cleanly through zero. ZA can be used as Amplifier at arbitrary wave input control. Low temperature coefficient <10ppm and High stability. ZA series are suitable for both through zero high voltage and HV amplifiers

TYPICAL APPLICATION

Arbitrary wave amplifier, High voltage amplifier, Piezoceramics drive, Electrostatic deflexion /focus, Provides power to double lenses, Mass spectrometry, Electron microscope, Electrostatic chuck, Electron beam and Ion Beam, MEMS device, Electrostatic active polymer, Electron hydrodynamic, Laser and electrooptic modulating, Electrophoresis, Electro spinning.

SELECTION TABLE

kV	mA	P(W)	MODEL	kV	mA	P(W)	MODEL	kV	mA	P(W)	MODEL
0.05	20	1	ZA0.05*1	0.4	2.5	1	ZA0.4*1	1	1	1	ZA1*1
	40	2	ZA0.05*2		5	2	ZA0.4*2		2	2	2
0.1	10	1	ZA0.1*1	0.5	2	1	ZA0.5*1	1.25	0.8	1	ZA1.25*1
	20	2	ZA0.1*2		4	2	ZA0.5*2		1.6	2	2
0.2	5	1	ZA0.2*1	0.6	1.67	1	ZA0.6*1	1.5	0.67	1	ZA1.5*1
	10	2	ZA0.2*2		3.33	2	ZA0.6*2		1.33	2	2
0.3	3.33	1	ZA0.3*1	0.8	1.25	1	ZA0.8*1	2	0.5	1	ZA2*1
	6.67	2	ZA0.3*2		2.5	2	ZA0.8*2		1	2	2

SELECTION EXAMPLE

ZA	2	*	2	VP	10	VIM	10	HS	M1
Series Number	Max output Voltage (kV)	Polarity P: positive N: negative R: Through zero	Max output Power (W)	option Voltage programming	option 10: P: 0~+10Vdc=0~positive maximum output N: 0~+10Vdc=0~Negative maximum output R: -10Vdc~-10Vdc=Negative maximum output to positive maximum output 5: 0~+5Vdc=0~positive maximum output N: 0~+5Vdc=0~Negative maximum output R: -5Vdc~-5Vdc=Negative maximum output to positive maximum output	option VM: Voltage monitor IM: Current monitor VIM: Voltage/ current monitor	option 10: P VM0~+10Vdc=0 to maximum output N VM0~+10Vdc=0 to maximum output IM 0~+10Vdc=0 to maximum output R VM0~-10Vdc~+10Vdc=Negative maximum output to positive maximum output R IM: VM0~-10Vdc~+10Vdc=Negative maximum output to positive maximum output 5: P VM0~+5Vdc=0 to maximum output IM 0~+5Vdc=0 to maximum output N VM0~-5Vdc=0 to maximum output IM 0~+5Vdc=0 to maximum output R VM-5Vdc~+5Vdc=Negative maximum output to positive maximum output IM: +5Vdc~-5Vdc=Negative maximum output to positive maximum output	option GND=HV OFF OPEN=HV ON	option M1: M1 option M2: M2 option

APPLICATION SPECIFIC

FEATURES

ISO9001:2015

Page 2 of 2

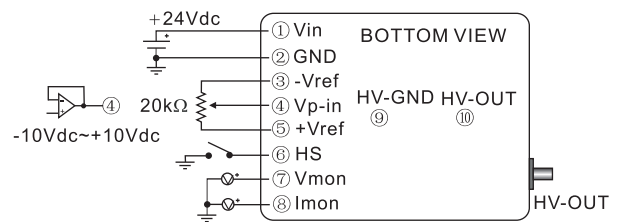
APPLICATION SPECIFIC

Parameter	Describe
Input	+24Vdc±10%,420mA maximum
Output	±0.05kV~±2kV,optional
Stability	0.001% per hour after half an hour's warm up
Temperature coefficient	≤10ppm/°C。
Ripple	0.001%p-p, under the condition of rated voltage
Current monitor	+10Vdc~-10Vdc=negative maximum output to positive maximum output, accuracy:±1%
Voltage monitor	-10Vdc~+10Vdc=negative maximum output to positive maximum output, accuracy:±1%
Voltage remote control	External 20KΩ potentiometer or remote control voltage(Vp-in)-10Vdc~+10Vdc
Voltage load regulation	0.01%(no load to full load)
Voltage line regulation	±0.001% (input voltage changes ±10%)
Operation temperature	0°C~+40°C。
Storage temperature	-40°C~+100°C。
Cooling	Convection cooling
Humidity	20%~95%RH, no condensing
Dimensions	0.87" H x 2.25" W x 2.75" D (22.00mm x 57.00mm x 70.00mm)。
Weight	150g。

PIN INFORMATION

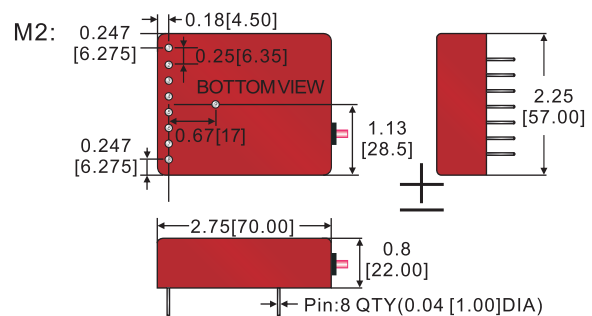
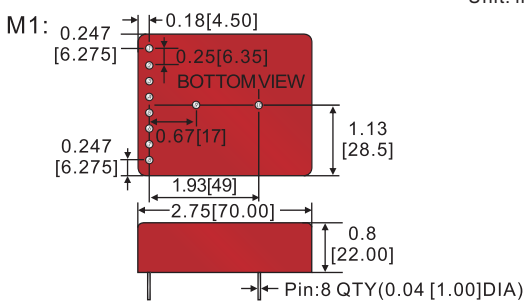
PIN	DESCRIBE	PIN	DESCRIBE
1	Power input,+24Vdc±10%	6	HS
2	Power GND	7	Voltage monitor
3	-10Vdc reference Voltage	8	Current Monitor
4	Voltage programming	9	HV GND
5	+10Vdc reference Voltage	10	HV output

WIRING DIAGRAM

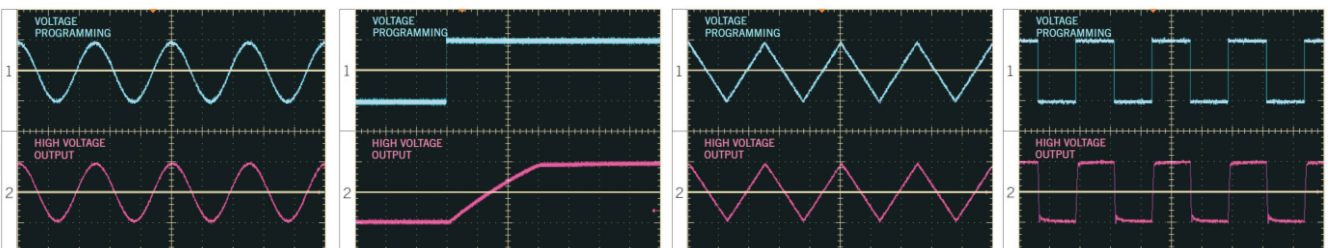


DIMENSION

Unit: inch(mm)



ZA SERIES WAVE FORMS SAMPLE



If you want higher voltage, larger power, high frequency through zero high voltage power supply, high voltage amplifier, 4 quadrant high voltage power supply, please call us.